

SATELLITE-BASED
MONITORING
SERVICE OF THE
COASTAL AND
MARINE AREAS



Rheticus[®]
MARINE

The logo for Rheticus MARINE features the word "Rheticus" in a dark blue serif font with a registered trademark symbol, and "MARINE" in a smaller, red, sans-serif font below it. Above the word "Rheticus" is a decorative horizontal line composed of several small red squares of varying heights.

DYNAMIC SATELLITE MONITORING OF WATER QUALITY STATUS.

The marine and coastal environments are particularly exposed to anthropogenic pressures, pollution, and climate change. Eutrophication of coastal areas is one of the most fundamental and well-known water quality problems for densely populated and industrialized countries.

It is among the Marine Directive's descriptors of the European Union (MSFD) needed to assess the good status of the environment (Good Environmental Status) of marine areas.

Furthermore, the Water Framework Directive (WFD) includes eutrophication in the classification of ecological status, as it affects the biological and physical-chemical parameters of water quality.





INDUSTRIES.



GOVERNMENT

National-to-Local Administrations duties,
Parks.

FOOD

Fishery, Aquaculture.

ENERGY AND ENGINEERING

Desalination, Energy supply, Oil&Gas.



RHETICUS[®] MARINE.

**Get the vital information your coastline
and marine assets need to be safe and clean.**

Rheticus[®] Marine is our tool for national and local authorities, it helps them in complying with environmental reporting duties (Marine Strategy and Water Framework Directives), as well as timely keeping track of any change of water and coastlines conditions that may result in severe issues.

It also provides you with serviceable geo-analytics data, near-real-time maps on parameters such as coastal water quality, as well as eutrophication statistics such as chlorophyll, turbidity, transparency, not to mention timely alerts that assist you in taking immediate action when needed.

All information is accessible through a user-friendly web interface, just login and sustainable management of sea water quality and safety will be at your fingertip.

BENEFITS



**GET ACCURATE AND RELIABLE
SATELLITE-BASED INFORMATION**



MONITOR ENVIRONMENTAL PARAMETERS



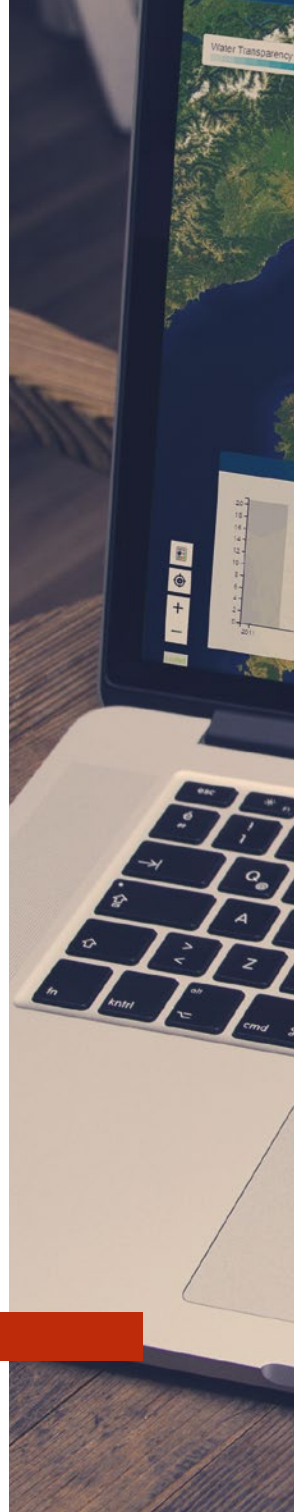
ENHANCE ENVIRONMENTAL REPORTING

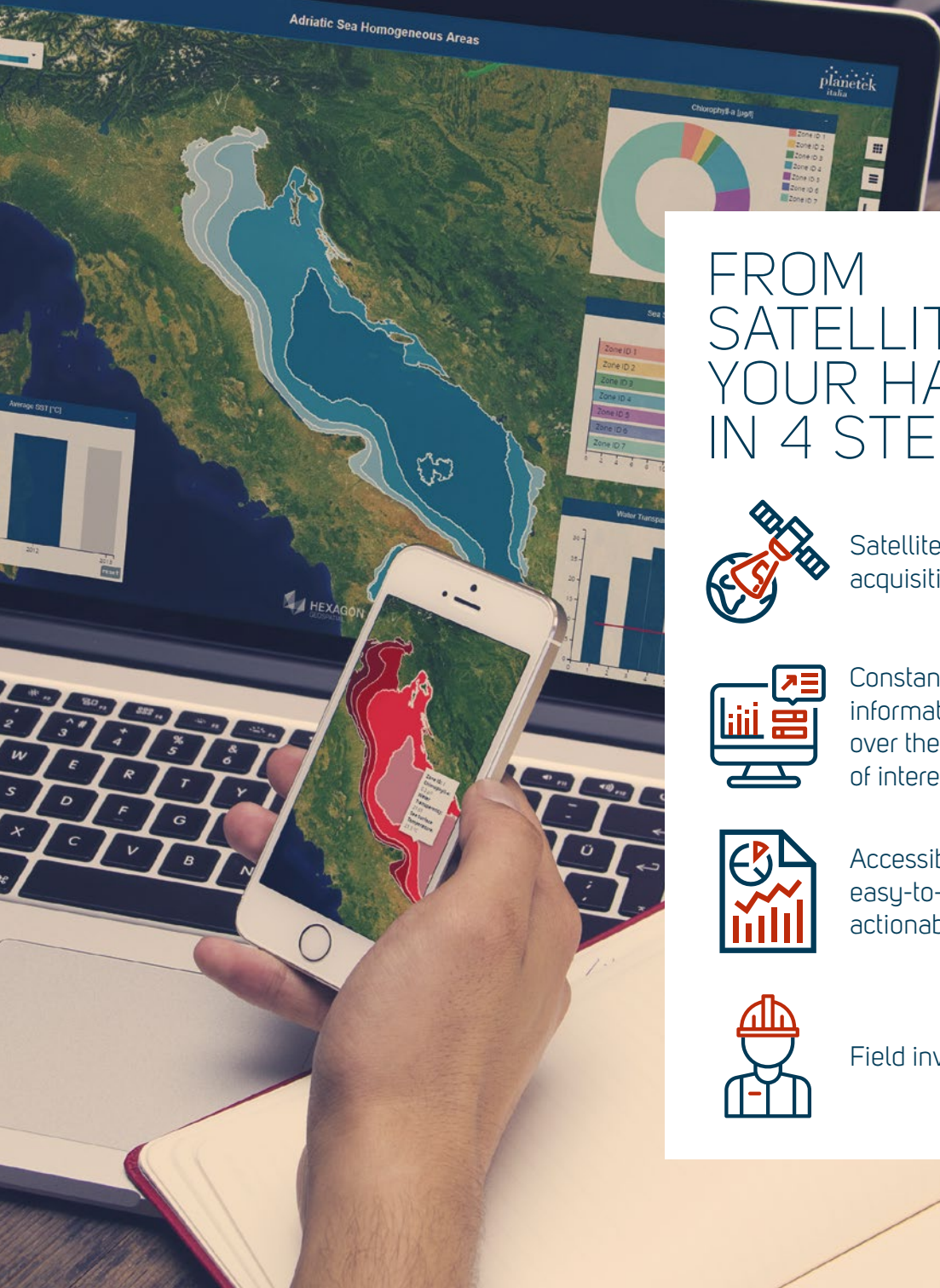


IMPLEMENT RISK MITIGATION

ACTIONABLE INSIGHTS FOR YOUR REPORTING.

Rheticus® Marine service offers users detailed geospatial information and a complete picture of the seawaters' quality and evolution over time, helping to reach a full overview of coastal areas and marine resources. The excellent support to spot trends and to anticipate risky situations and harmful events. Users can access dynamic maps, reports, and alerts through a friendly and easy-to-use dashboard to quickly identify the water status.





FROM SATELLITE TO YOUR HANDS IN 4 STEPS



Satellite image
acquisition



Constantly updated
information, ranging
over the whole area of
interest



Accessible,
easy-to-read, and
actionable report



Field investigation



EVERYTHING UNDER CONTROL.

The quality parameters of the water analyzed are chlorophyll, water transparency, turbidity, temperature, dissolved oxygen, salinity.

They are provided thanks to the satellite open data available daily on the area of interest indicated by the user.

Additional statistics are provided, on time aggregations every 10 and 30 days.





Subscription-based



Backward
analysis and
continuous update



Environmental
reporting compliant
to EU Marine and
Water Framework
Directives



24/7
Synoptic view



No need to install
expensive ground
sensors



Cloud-based

GATHER GEOSPATIAL INTELLIGENCE, NOW.

Many users have already discovered the benefits of Rheticus® Marine. Search our website for our customers' success stories and learn about the benefits of integrating Rheticus geoinformation services in your management and operational activities.

For commercial and technical support, you will always count on our global team of authorized distributors and on Planetek Italia's experience of over 25 years. Gather geospatial intelligence, now. Contact us or request a demo.



WHAT CUSTOMERS SAY

Thanks to Rheticus® service we are able to provide everyday accurate and reliable information about water quality parameters in our regions coastal area.

***Serafim Tsipelis,
Water Directorate, Decentralized
Administration of Epirus and Western
Macedonia, Greece.***



Rheticus®

monitoring the evolution of our earth

INFO@RHETICUS.EU | WWW.RHETICUS.EU



Developed by



planetek
italia